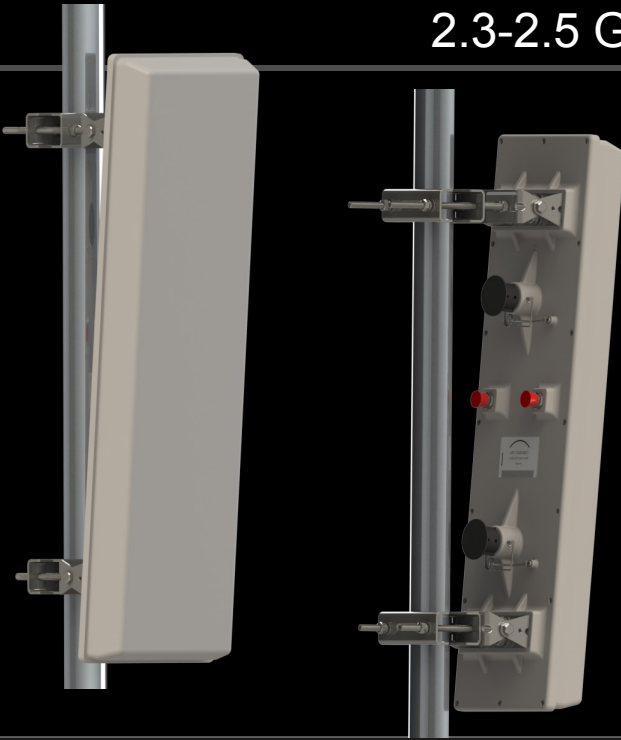




ARC-VS2418SD1

ARCFlex™ Dual Polarization
Variable Beamwidth Sector Antenna
2.3-2.5 GHz, 60-120° Beamwidth, 18-16 dBi



- Wide range of beamwidths, 1 SKU
- Mechanical slide for easy field adjustments
- Ultra wideband frequency performance
- High gain antenna in compact package
- Low profile, rugged design for outdoor use
- US Engineered
- Manufactured under strict US quality control procedures

Electrical Specifications

Frequency Range	2.4-2.5 GHz		
Polarization	Dual Linear – Vertical and Horizontal		
Horizontal (AZ) Beamwidth*	60°	90°	120°
Gain (dBi)	18	17	16
Vertical (EL) Beamwidth	8.0 deg		
VSWR 2.3-2.5 GHz	1.5:1 Typ		

Front-to-Back Ratio	>25 dBi
Cross Polarization	>25 dBi
Sidelobe Level	>12 dBi
Port to Port Isolation	>25 dBi
Power Rating	20 watts
Impedance	50 ohms
Lightning Protection	DC ground

Physical/Environmental Specifications

Length x Width x Depth	28in x 6.4in x 2.5in <i>(Excluding Bracket and Adjustment Slide)</i>
Weight	9 lbs (2.3kg)
Radome	UV Stabilized ABS plastic, gray
Wind Survivability	125mph (201kph)
Wind Load	1.16ft ²
Operating Temperature	-49°F to 149°F (-45°C to 65°C)

Pole Mount Diameter Range	2.0 to 2.75in (5.0 to 7.0cm)
Environmental	IP 65
Connector	Type-N Jack (2)
Mechanical Downtilt	+15 deg/ -30 deg

* All beam widths are listed at the 3dB point except for 120° beam on horizontal polarization is listed at 6dB point



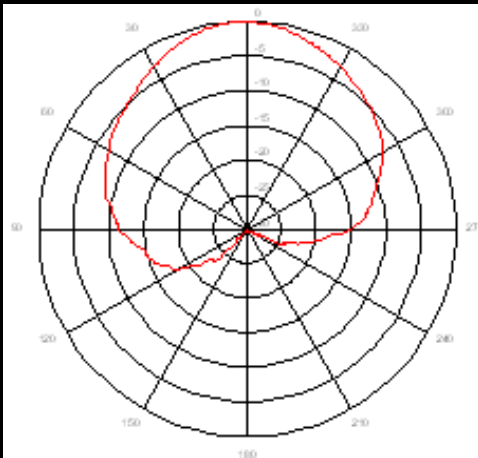
ARC-VS2418SD1

ARC EXSITE™ Dual Polarization
 Variable Beamwidth Sector Antenna
 2.4-2.5 GHz, 60-120° Beamwidth, 18-16 dBi

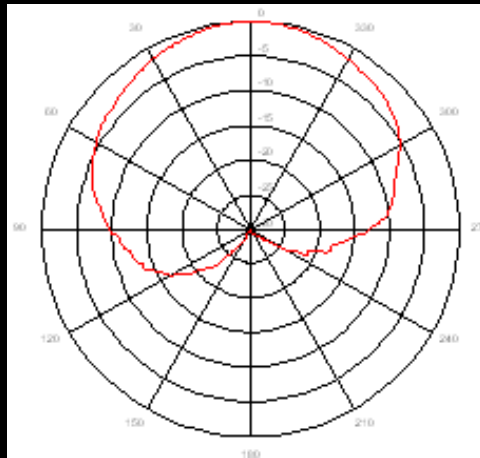
Antenna Patterns

RF Patterns Horizontal Cut, typ.

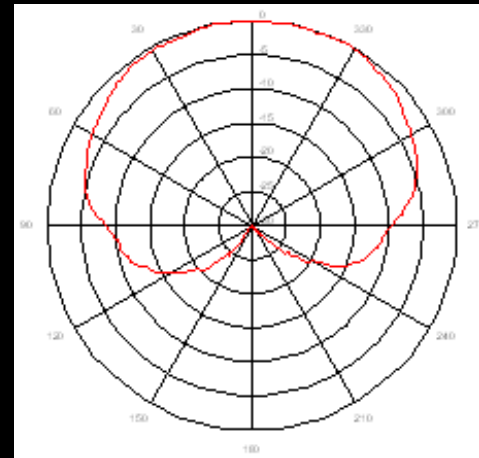
60°



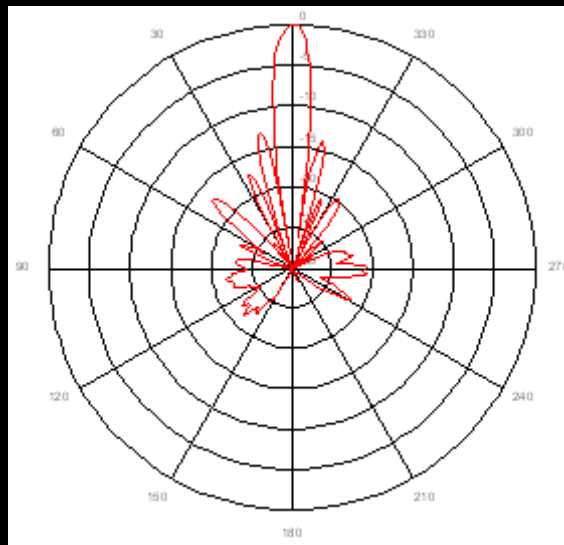
90°



120°



RF Patterns Vertical Cut, typ.



Shipping Information

Size	31x10x8"
Weight	11.0 lbs
Description	Single Pack

Ordering Information

Part Number	ARC-VS2418SD1
Description	Sector, 2.4-2.5 GHz, 60-120deg, 18-16dBi, Variable Sector Antenna, Type-N Jack (2), Dual Pol